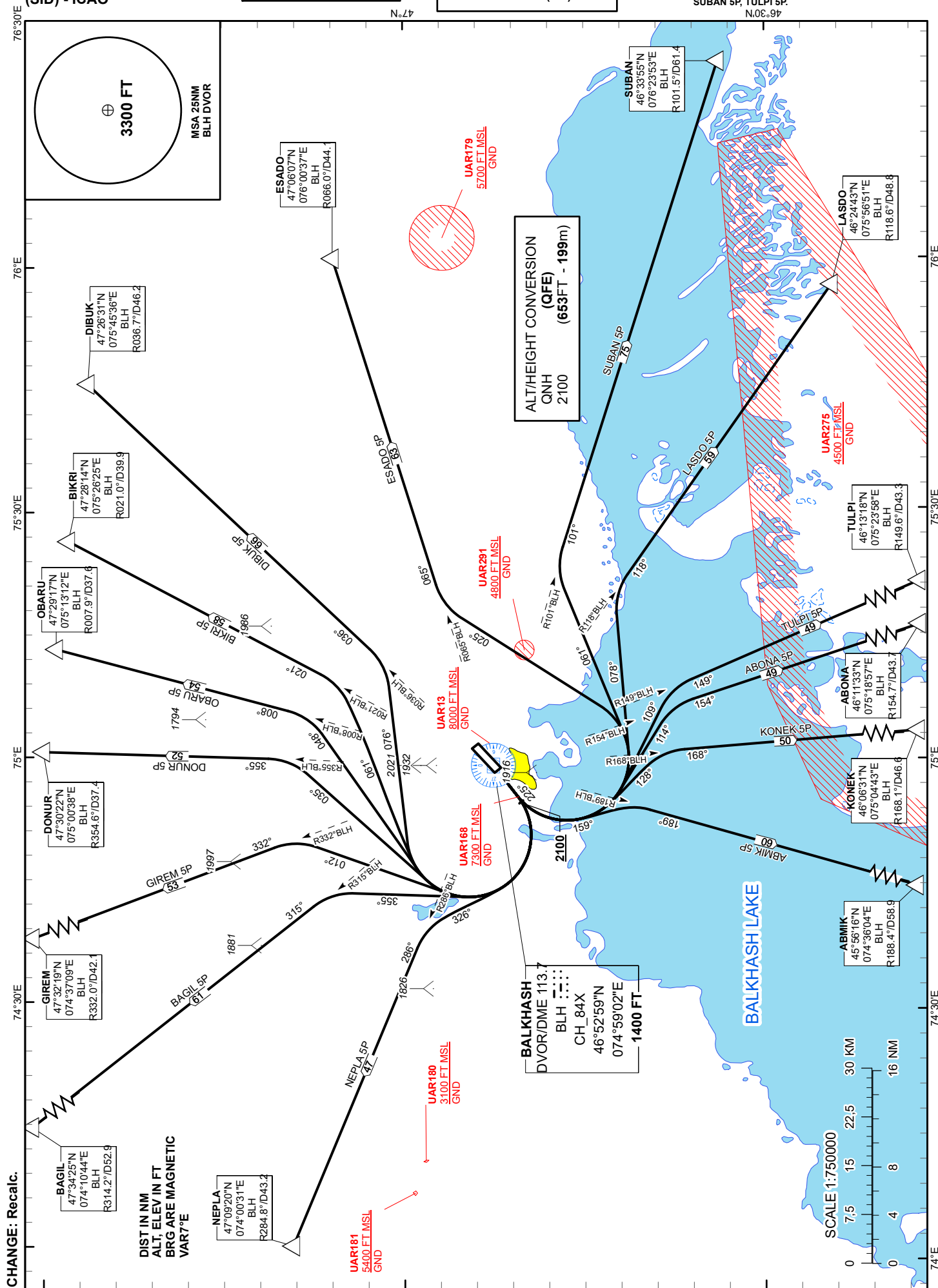


BALKHASH
RWY 22



STANDARD DEPARTURE ROUTES – INSTRUMENT (SID) BALKHASH RWY 22**NEPLA 5P**

After take-off climb straight ahead to 2100 or above. Then turn RIGHT on track 326° until intercept R286° BLH, then proceed on track 286° to NEPLA (R284.8° D43.2 BLH).

BAGIL 5P

After take-off climb straight ahead to 2100 or above. Then turn RIGHT on track 355° until intercept R315° BLH, then proceed on track 315° to BAGIL (R314.2° D52.9 BLH).

GIREM 5P

After take-off climb straight ahead to 2100 or above. Then turn RIGHT on track 012° until intercept R332° BLH, then proceed on track 332° to GIREM (R332.0° D42.1 BLH).

DONUR 5P

After take-off climb straight ahead to 2100 or above. Then turn RIGHT on track 035° until intercept R355° BLH, then proceed on track 355° to DONUR (R354.6° D37.4 BLH).

OBARU 5P

After take-off climb straight ahead to 2100 or above. Then turn RIGHT on track 048° until intercept R008° BLH, then proceed on track 008° to OBARU (R007.9° D37.6 BLH).

BIKRI 5P

After take-off climb straight ahead to 2100 or above. Then turn RIGHT on track 061° until intercept R021° BLH, then proceed on track 021° to BIKRI (R021.0° D39.9 BLH).

DIBUK 5P

After take-off climb straight ahead to 2100 or above. Then turn RIGHT on track 076° until intercept R036° BLH, then proceed on track 036° to DIBUK (R036.7° D46.2 BLH).

ESADO 5P

After take-off climb straight ahead to 2100 or above. Then turn LEFT on track 025° until intercept R065° BLH, then proceed on track 065° to ESADO (R066.0° D44.1 BLH).

SUBAN 5P

After take-off climb straight ahead to 2100 or above. Then turn LEFT on track 061° until intercept R101° BLH, then proceed on track 101° to SUBAN (R101.5° D61.4 BLH).

LASDO 5P

After take-off climb straight ahead to 2100 or above. Then turn LEFT on track 078° until intercept R118° BLH, then proceed on track 118° to LASDO (R118.6° D48.8 BLH).

TULPI 5P

After take-off climb straight ahead to 2100 or above. Then turn LEFT on track 109° until intercept R149° BLH, then proceed on track 149° to TULPI (R149.6° D43.3 BLH).

ABONA 5P

After take-off climb straight ahead to 2100 or above. Then turn LEFT on track 114° until intercept R154° BLH, then proceed on track 154° to ABONA (R154.7° D43.7 BLH).

KONEK 5P

After take-off climb straight ahead to 2100 or above. Then turn LEFT on track 128° until intercept R168° BLH, then proceed on track 168° to KONEK (R168.1° D46.6 BLH).

ABMIK 5P

After take-off climb straight ahead to 2100 or above. Then turn LEFT on track 159° until intercept R189° BLH, then proceed on track 189° to ABMIK (R188.4° D58.9 BLH).